

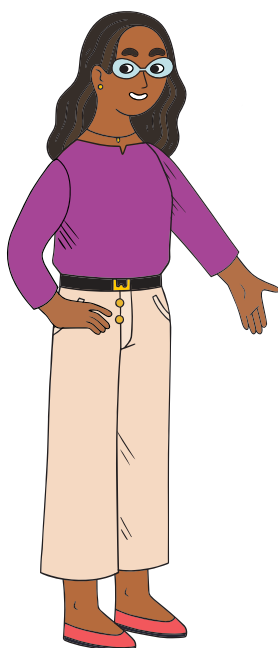


BusReady BASICS Checklist

Use the helpful acronym to teach young riders how to ride transit safely and responsibly.

B

Be courteous



Before your child rides the bus, take the time to plan the trip together. Use the BC Transit Trip Planner on the website to answer the following questions together.

☐

Where are you going? Find the route options for the destination.

☐

Who will you be riding the bus with? Whether they're riding alone or with a friend, discuss what to do if they feel unsure or need help.

☐

Which bus route do you need? Check the route name and number on the front or side of the bus before boarding.

☐

Where do you get on and off the bus? Do you need to transfer to another bus? Know the stops closest to the start of the trip and the stop closest to the destination. Some trips may require a transfer to another bus—Be sure to know all the route numbers and connecting stops to get to the destination.

☐

What time does the bus arrive? Confirm when the bus arrives at the stop and add at least five minutes before the bus is scheduled to arrive.

☐

A

Ask for help

If your child feels lost, unsure or unsafe, the transit driver is equipped to help.

☐

S

Safely sit or stand

As soon as you board, find a comfortable seat or space to sit or stand for the entire journey.

☐



Inclusive Space



Public transit is a shared space by people from all walks of life. As a parent, you can help your child become a thoughtful and respectful rider by practicing a few key habits together:

☐

Keep bags and belongings close. Personal items should be on their lap or placed at their feet. Bags that swing or block the aisle can make it harder for others to move safely.

☐

Seats are for people. Bags, feet and wet umbrellas don't belong on seats.

☐

Keep calm voices and use headphones when listening to music. It removes distractions for the driver and allows all riders to hear stop announcements.

☐

Take any trash with them when they leave. Garbage doesn't belong on the bus.

☐

Be kind. Practicing patience, empathy and respect to create a positive environment for all riders.

☐


Check belongings

It's an easy step to miss, so make sure to do a final check of belongings before getting ready to exit the bus.

☐


Signal stop

You've planned out where you need to stop and hear the announcement of your stop. Request a stop by pressing the stop button or gently pulling the cord.

☐

Remember to exit quickly and safely at the rear doors of the bus.

☐

Give a quick thanks to the driver.

☐